



National Wind Farm Commissioner

Commissioner's Updates

July 2018

Andrew Dyer
National Wind Farm Commissioner

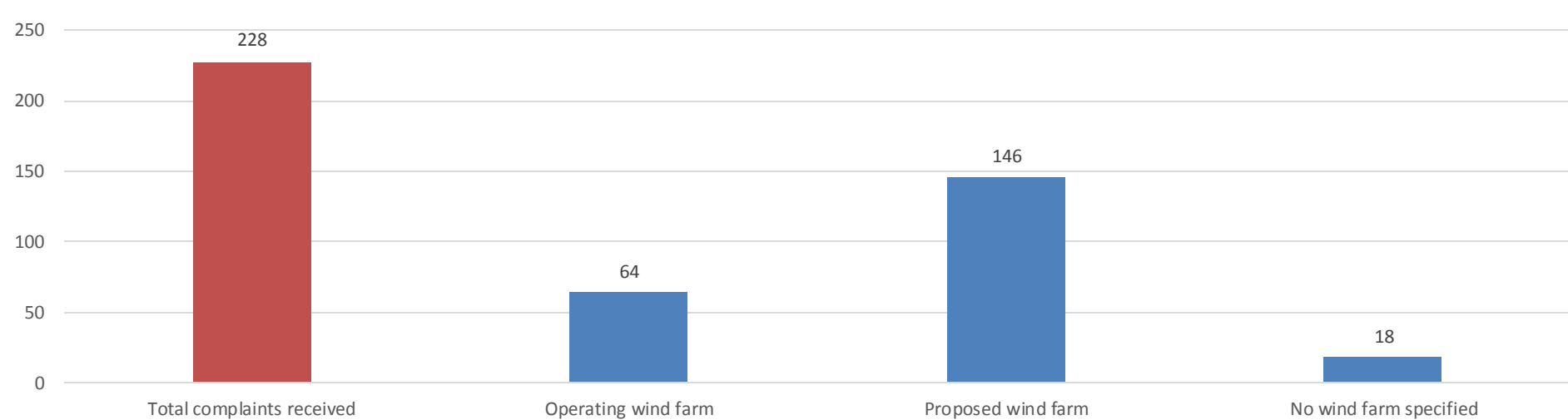
www.nwfc.gov.au

Agenda

- Complaint statistics
- Wind farms visited
- Review of Commissioner's role
- 2017 Annual Report – updated observations and recommendations
- Reforms

Complaint statistics

(as at 30 June 2018)

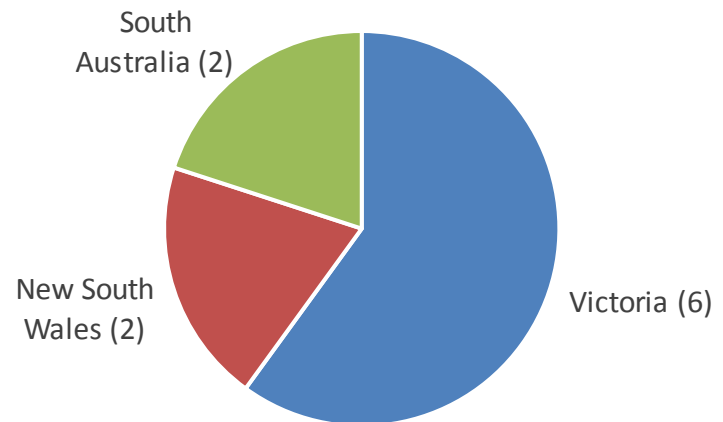


- 228 complaint enquiries received
- 64 complaint enquiries are from 10 operating wind farms
- 146 complaint enquiries are from 42 proposed wind farms
- 18 complaint enquiries did not specify a wind farm
- 192 cases closed, remaining 36 cases at various stages of our complaint handling process.

Complaint statistics – operating wind farms

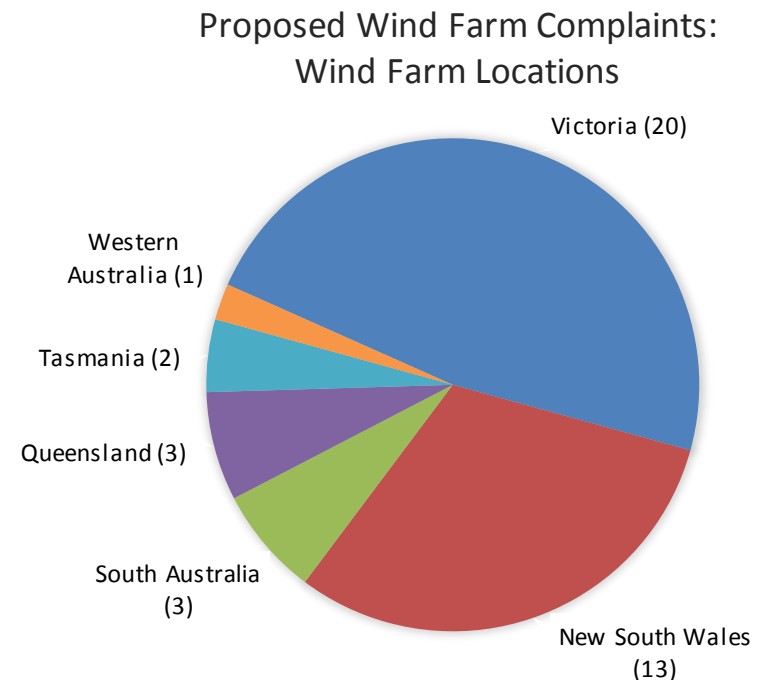
- 64 complaints about 10 operating wind farms:
 - Victoria – 38 complaints
 - NSW – 9 complaints
 - South Australia – 17 complaints.
- 63 of these cases have been closed.

Operating Wind Farm Complaints:
Wind Farm Locations



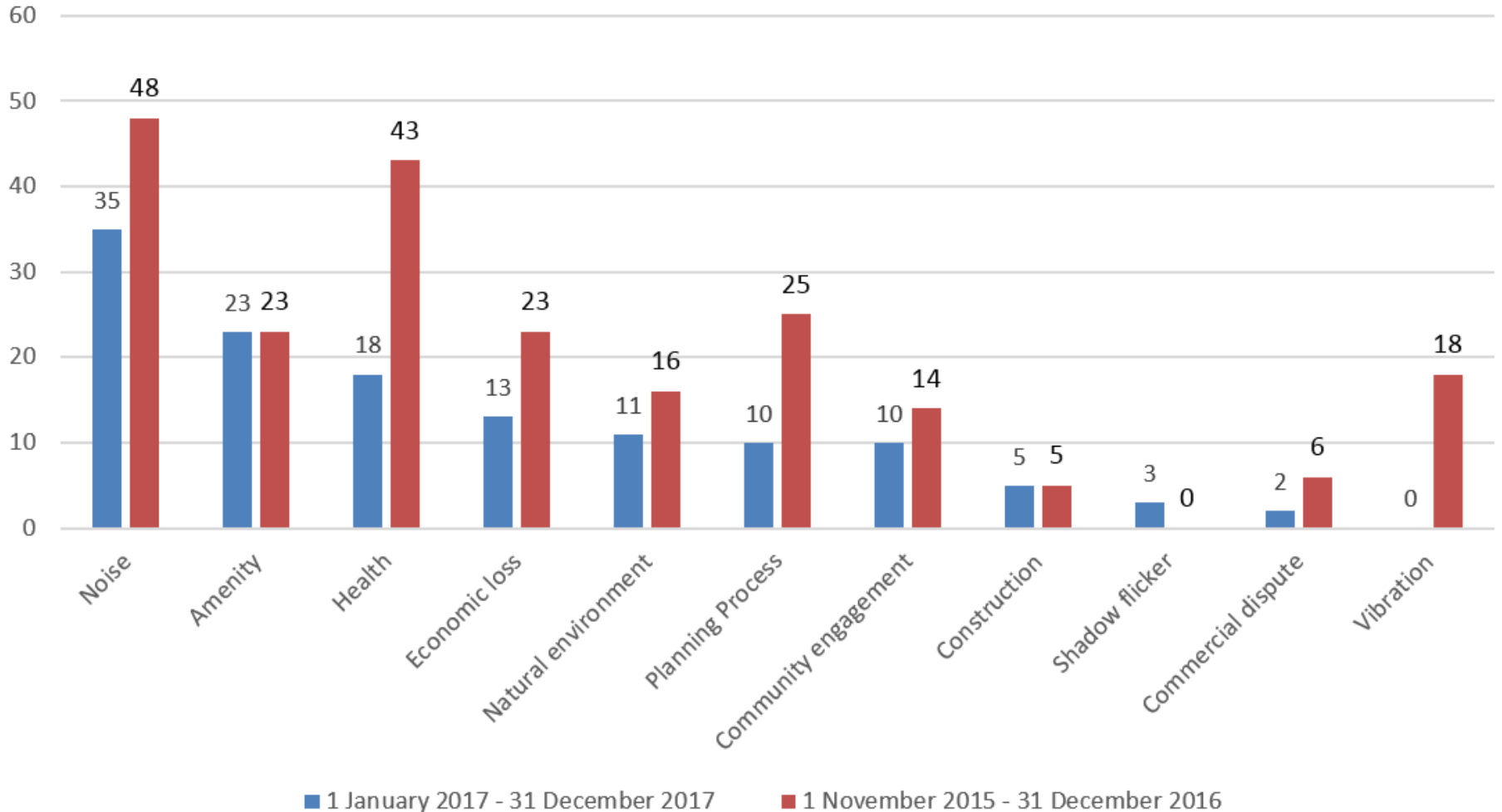
Complaint statistics – planned wind farms

- 146 complaints about 42 proposed wind farms:
 - Victoria – 91 complaints
 - NSW – 34 complaints
 - South Australia – 13 complaints
 - Queensland – 5 complaints
 - Tasmania – 2 complaint
 - Western Australia – 1 complaint.
- 114 of these cases have been closed.



Top Issues Raised by Complainants

(note: a complaint may include more than one issue)



40 wind farm sites visited

(*proposed wind farm sites)

Victoria:

Ararat
Bald Hills
Cape Bridgewater
Golden Plains*
Hawkesdale*
Hepburn
Lal Lal*
Macarthur
Moorabool*
Mt Gellibrand

Mt Mercer
Naroghid*
Oaklands Hill
Salt Creek
Waubra
Wonthaggi
Willatook*

NSW:

Bango*
Collector*
Coppabella*
Crookwell I
Crookwell II
Crudine Ridge*
Cullerin Range
Glen Innes*
Gullen Range
Gunning
Jupiter*
NSW Energy Cluster*
Sapphire*
White Rock
Walcha*

South Australia:

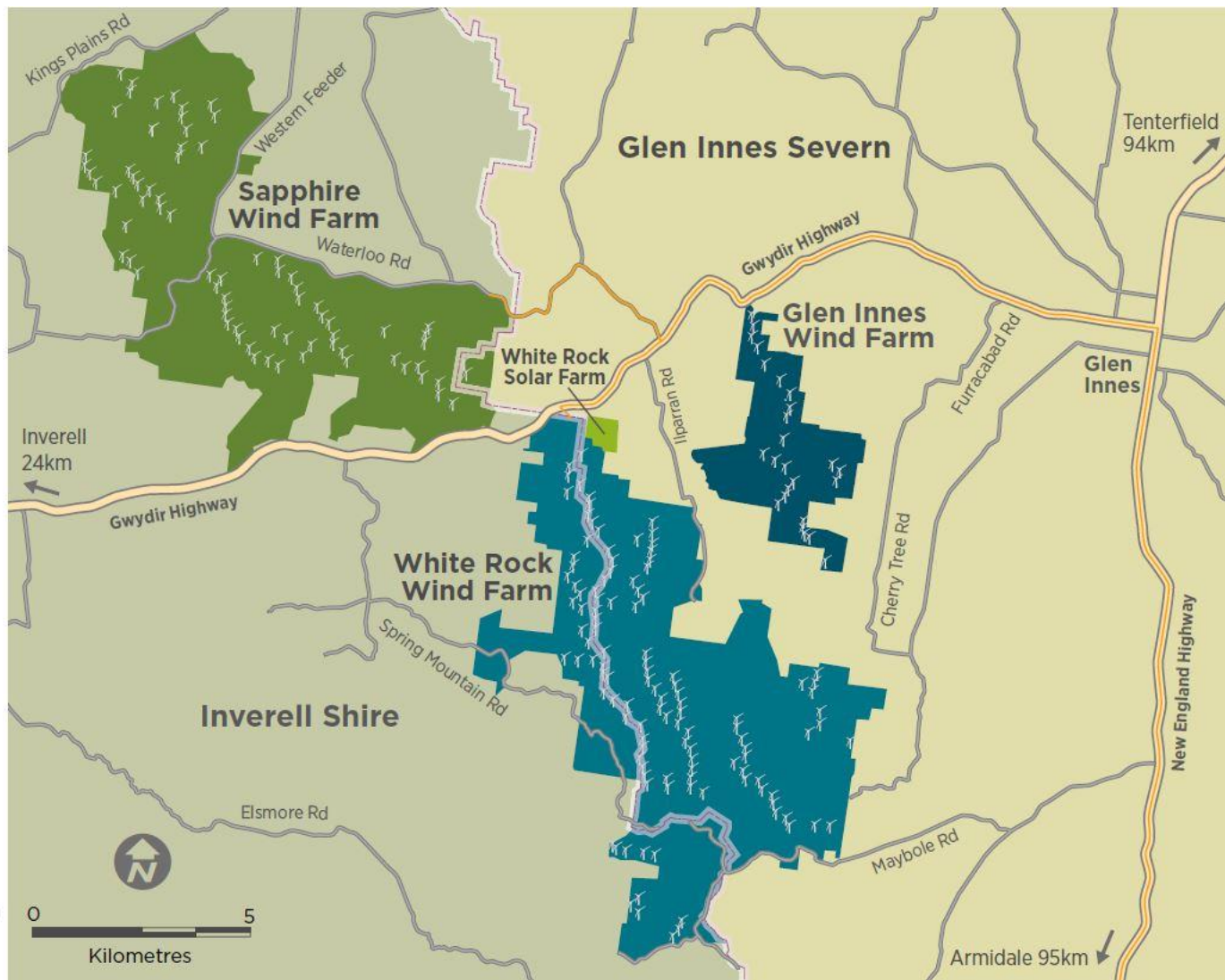
Hallet
Palmer*
Snowtown
Waterloo

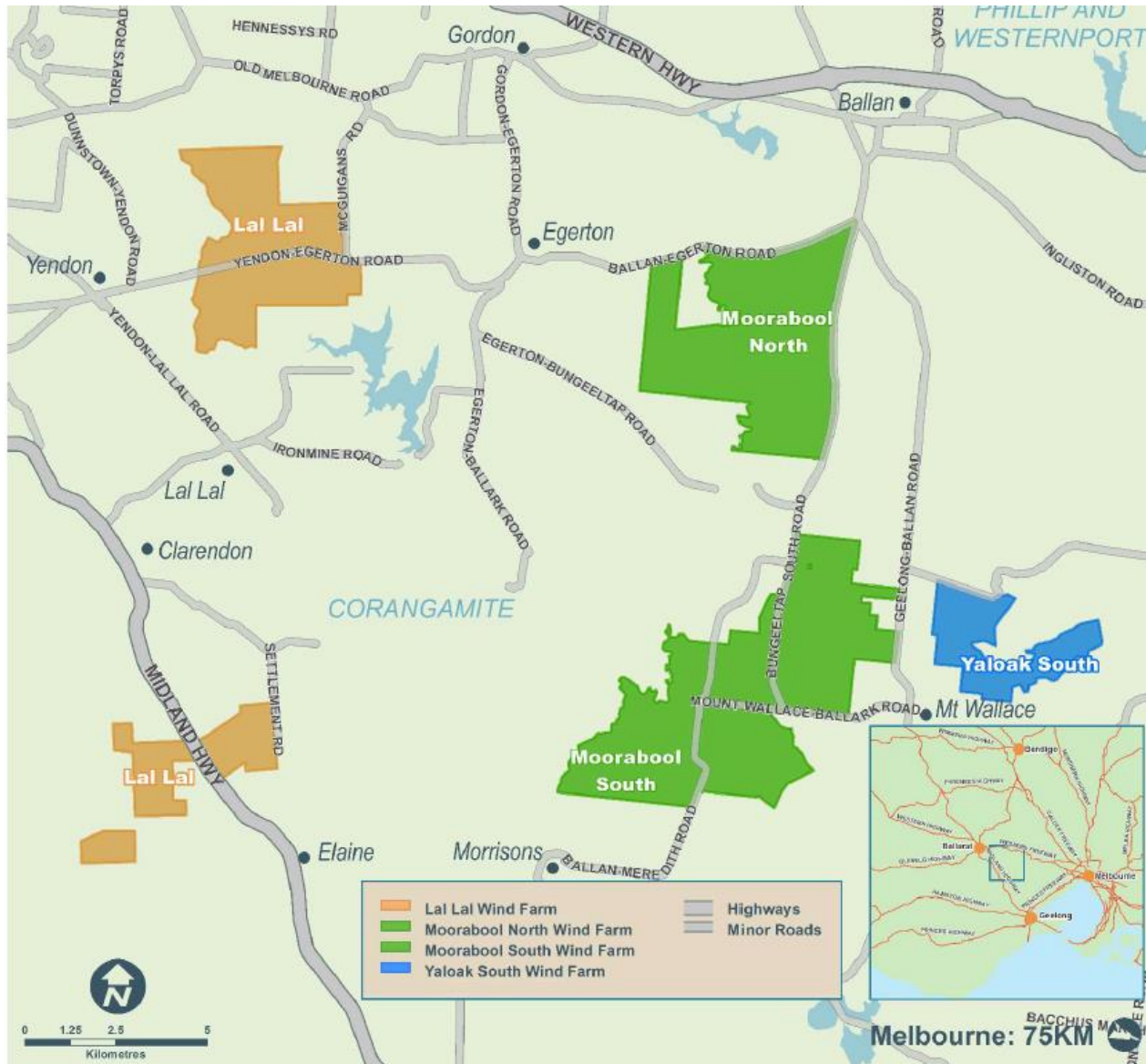
Western Australia:

Albany
Denmark
Mount Barker

Tasmania:

Musselroe





Review of Commissioner's Role

- In early 2018, the Federal Government directed the Climate Change Authority (CCA) to undertake review of the Commissioner's role.
- 66 submissions received from residents, community groups, industry and government agencies during public consultation.
- On 31 May 2018, a final report was published by the CCA. This is available at: <http://www.climatechangeauthority.gov.au/review-national-wind-farm-commissioner>
- Next step: Government response to CCA review

2016 Annual Report

Observations and Recommendations

1. Host landowner negotiations
2. Neighbour consultation and agreements
3. Community engagement
4. Length and renewal of planning permits
5. Governance and compliance of standards and permit conditions
6. Selection and use of experts
7. Complaint handling and emergency procedures
8. Site selection
9. Health matters

2017 Annual Report - updates

- Host landowner negotiations
 - Considerations for clarity in commercial agreements
 - Consultation with landowner before and during construction phase
 - Licensing or accreditation of prospecting developers
- Neighbour agreements
 - Updates relating to appropriate screening solutions
 - Consideration of host landowners who have missed out
 - Appropriate neighbour representation in CCC's etc.
- Community engagement
 - Ensuring contractors and other stakeholders are aware of responsibility to minimise community impacts
 - Coordinating multiple infrastructure projects in region

2017 Annual Report - updates

- Planning permits
 - Transmission lines, substations other electrical infrastructure should be assessed as part of the whole proposal
 - Neighbours proposing new developments with 1.5km of wind farm should be referred to wind farm developer/operator
- Standards
 - New setback distance standards for infrastructure, townships
 - Exceedance allowance of noise standards
 - Withholding LGCs in cases of unrectified material breach of compliance
- Experts
 - Best practice assessment process
 - Ensuring that referral agencies are consulted are considered
 - Outlining four step assessment and independent audit process

2017 Annual Report - updates

- Complaint handling and emergency procedures
 - Councils should have policies and procedures in place for wind farm noise complaints
- Site selection
 - Consideration of transmission infrastructure during the development of the ISP
- Health
 - New decisions (Waubra Foundation v ACNC)
- Reforms and initiatives

Reforms and initiatives

- Assisting state governments during their reviews of wind farm planning guidelines. Most recently we have assisted and provided input to reviews in NSW, Victoria and Western Australia.
- Consulting with lenders, such as the CEFC, to encourage the consideration of specific loan conditions to improve community outcomes and rigour of processes (eg. independent auditing of noise assessments and noise testing reports).
- Collaborative review of wind farm project pipelines with Federal Government stakeholders to identify projects that may have lapsed, changed and/or projects that should be proactively reached out to.
- Providing guidance to the Australasian Fire & Emergency Service Authorities Council (AFAC) and state-based emergency services responders in relation to emergency management/bushfire protocols based on our learnings from actual emergency events.
- Advocating a more transparent assessment process in the event of consent to change permit conditions where material changes to a wind farm's design are proposed, to ensure processes are clear. The Victorian Minister for Planning has now adopted this approach in approving planning permit modifications. For instance, best practice noise assessment should include independent audits of predictive noise modelling, background noise modelling; and post-construction noise assessment.

Reforms and initiatives (cont.)

- Review of the Clean Energy Regulator's compliance enforcement powers and actions that may be taken by the CER in the event of a suspected unrectified material breach of compliance by a wind farm operator.
- Reviewing and advocating for fair and reasonable agreements between wind farms and landowners.
- Consulting with construction companies involved in wind farm projects to proactively assist them in their community engagement and complaint response programs.
- Providing input to the new Victorian guidelines and criteria for effective community engagement, as to be applied for candidates seeking to participate in the Victorian Renewable Energy Target (VRET) program.
- Providing suggestions to assist local councils fulfil their compliance responsibilities in relation to operating wind farm projects.

Discussion/questions?